

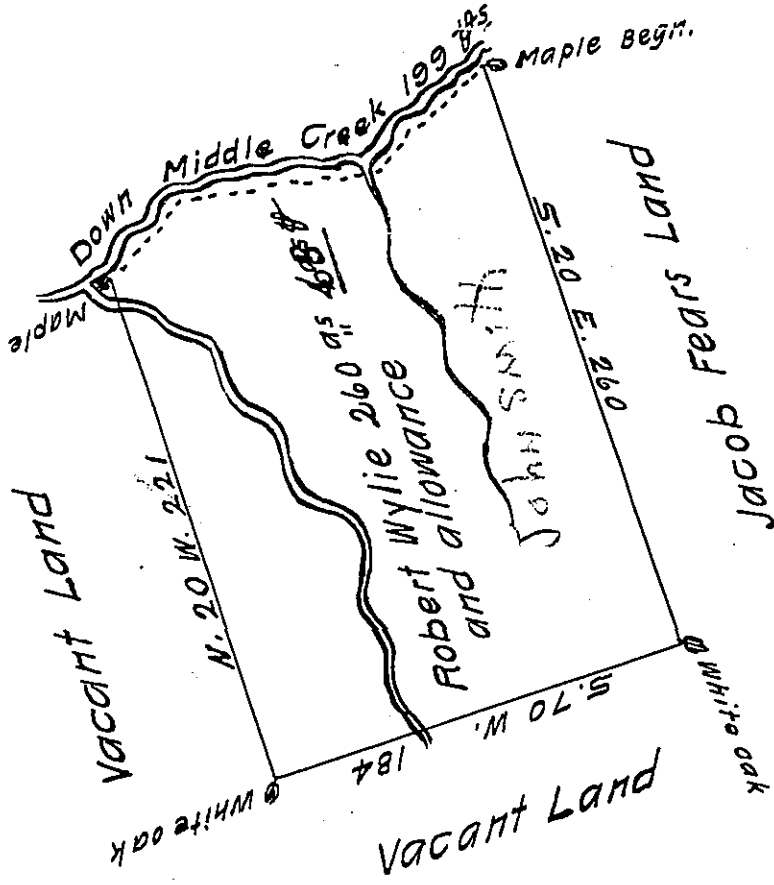
The courses down the creek are viz.

N. 37 E. 45

N. 79 E. 89

N. 44 E. 65

in all 199 $\frac{1}{2}$



C-7-116

The Draught of a tract of land called _____ situate in Penns township Northumberland County containing two hundred and sixty acres and sixty eight perches with the usual allowance of six acres $\frac{1}{2}$ cent. for roads &c surveyed the 5th day of October Anno Domini 1769 in pursuance of an order of survey to Robert Wylie bearing date at Philad^a the 5th day of November Anno Domini 1767 and No 4551

W^m Maclay _____

To John Lukens Esq^r Surv^r Gen^l }
of the Province of Pennsylvania }

IN TESTIMONY that the above is a copy of the original remaining on file in the Department of Internal Affairs of Pennsylvania, made conformably to an Act of Assembly approved the 16th day of February, 1833, I have hereunto set my Hand and caused the Seal of said Department to be affixed at Harrisburg, this twenty sixth day of May 1911

Henry Horst
Secretary of Internal Affairs.